

# Horizon Europe How to participate from Japan

---

National Contact Point for Horizon Europe  
EU-Japan Centre for Industrial Cooperation

---

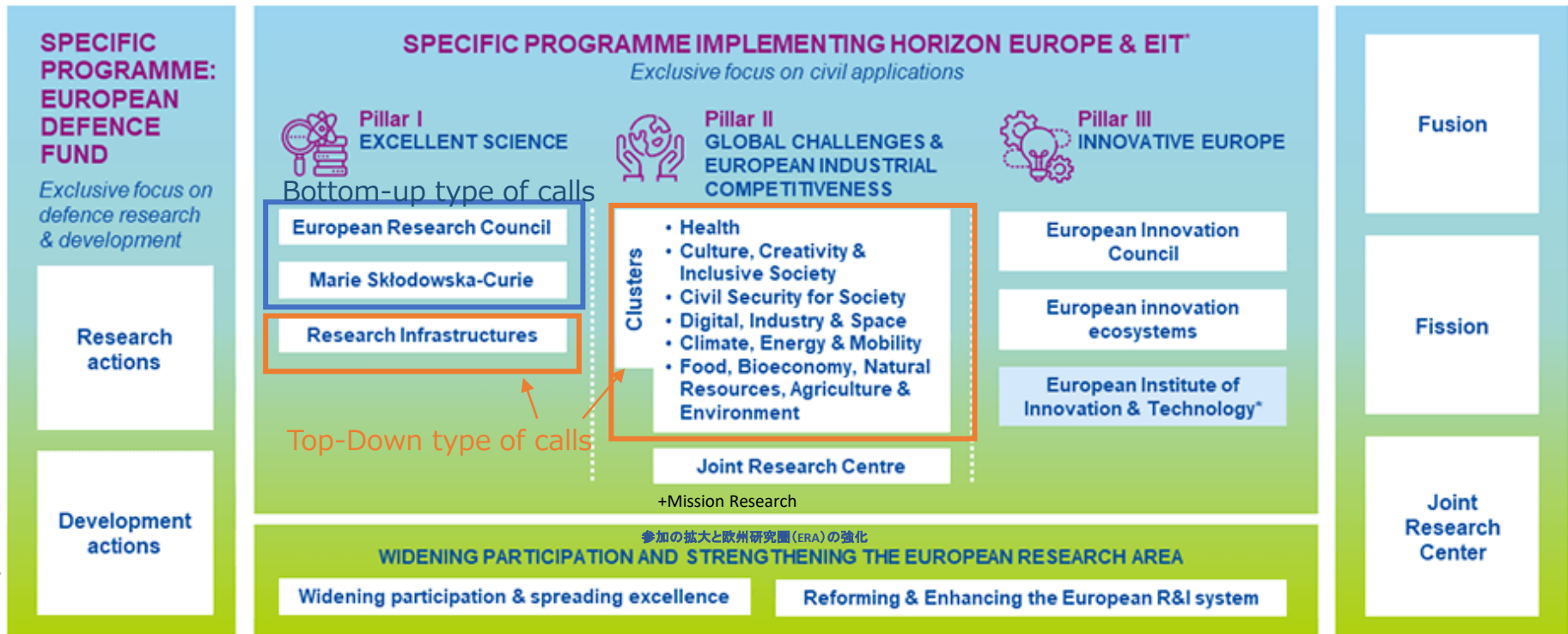
As of January 2022

Horizon Europe consists of various programs and thematic research areas categorized under three pillars: "Science Excellence", "Global Challenges and European Industrial Competitiveness", and "Innovative Europe".

Total Budget 95.5B EUR  
(JPY: 約12兆7千億円)

## HORIZON EUROPE

## EURATOM



\* The European Institute of Innovation & Technology (EIT) is not part of the Specific Programme

# Marie Skłodowska-Curie Actions (MSCA)

# Marie Skłodowska-Curie Actions (MSCA)

Fostering career development and transferable skills of researchers who are expected to work in the EU through 3Is: intersectoral (industry-academia), interdisciplinary and international mobility. Mobility is the key to the program.

## Doctoral Network(DN)

- Consortia host and provide postdoctoral training for candidates who wish to obtain postdoctoral degree. (doctoral candidates apply to call for by a host institute.)



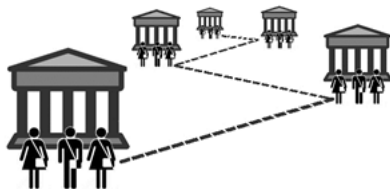
## Postdoctoral Fellowship (PF)

Postdoctoral fellows and above conduct research in Europe to hone their new skills. (Host institute submit with a fellow)



## Staff Exchange

- Participate in short-term exchange of researchers and staffs within a consortium to cooperate in research. (Researcher needs to apply from an entity)



## COFUND

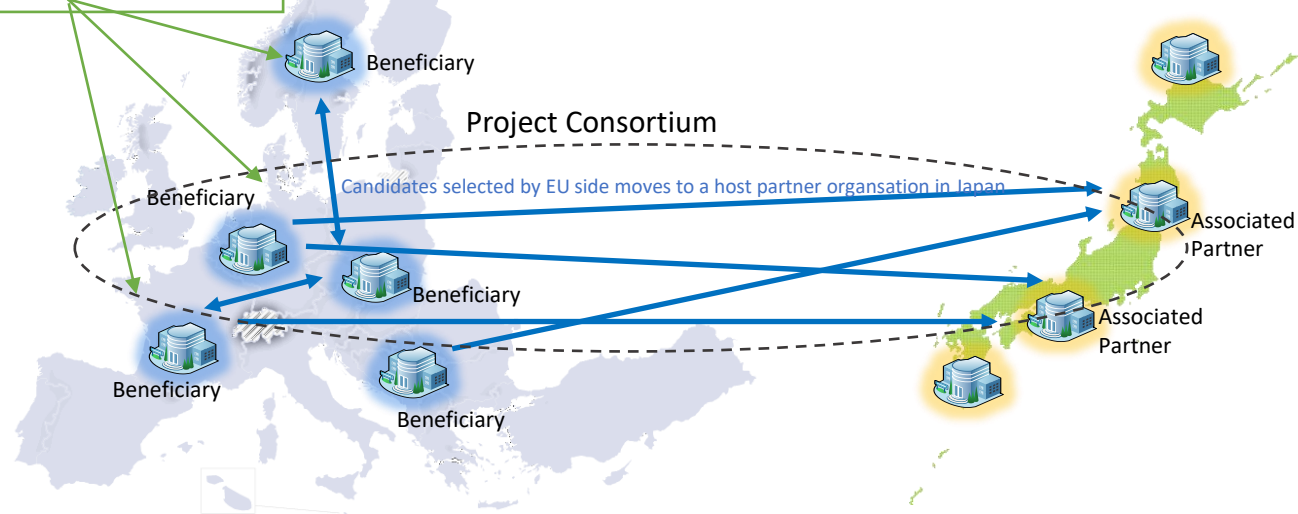
Funding is provided through tie-ups with European funding agencies.

Japanese institutions are not eligible to apply. (Individual fellows should apply separately to the call for application by the project team)



European research institutions jointly apply to implement the PhD. program and trainings. Researchers in Japan can participate as a host or as a doctoral candidate to take the training program provided by the host organization.

Anyone can apply as a candidates to a doctoral training program provided by the project as long as they meet the requirements provided by the beneficiary.



**Doctoral Program**

**As a Host or Fellow**

**Bottom-up**

## (Participation as a individual candidates)

### **Participation as a Doctoral Fellow**

Individual researcher (a fellow) can participate in doctoral training programs conducted by the project selected by Horizon Europe.

(A fellow can apply to open call for doctoral fellowship from application page published in EURXESS or the host institution's own web page).

### Doctoral Network

#### Criteria for Individual Candidates (fellows)

- Project duration: 36 months (candidates can be seconded up to 1/3 (=12 months) to other partner organizations)
- Researcher with any nationality may apply
- Researcher should be candidate of PhD (candidate who has not obtained PhD. yet)
- Researcher must join at least one program hosted by at least one entity in EU/AC (must choose two entities from EU/AC if project offers Joint Doctorate program)
- The applicant must not have stayed/researched in the host country for more than 12 months in total during the past 36 months.
- Travel cost, salary must be provided by the host institution (EU/AC).

# Doctoral Network (Costs covered by the fund)

Allowances for EU researchers and research activity costs covered by the host institutions in EU and Japan

Funds paid by EC to EU/AC host institution to cover the allowances for each fellow per month

Funds paid by EC to EU/AC host institution to cover research costs for each fellow per month

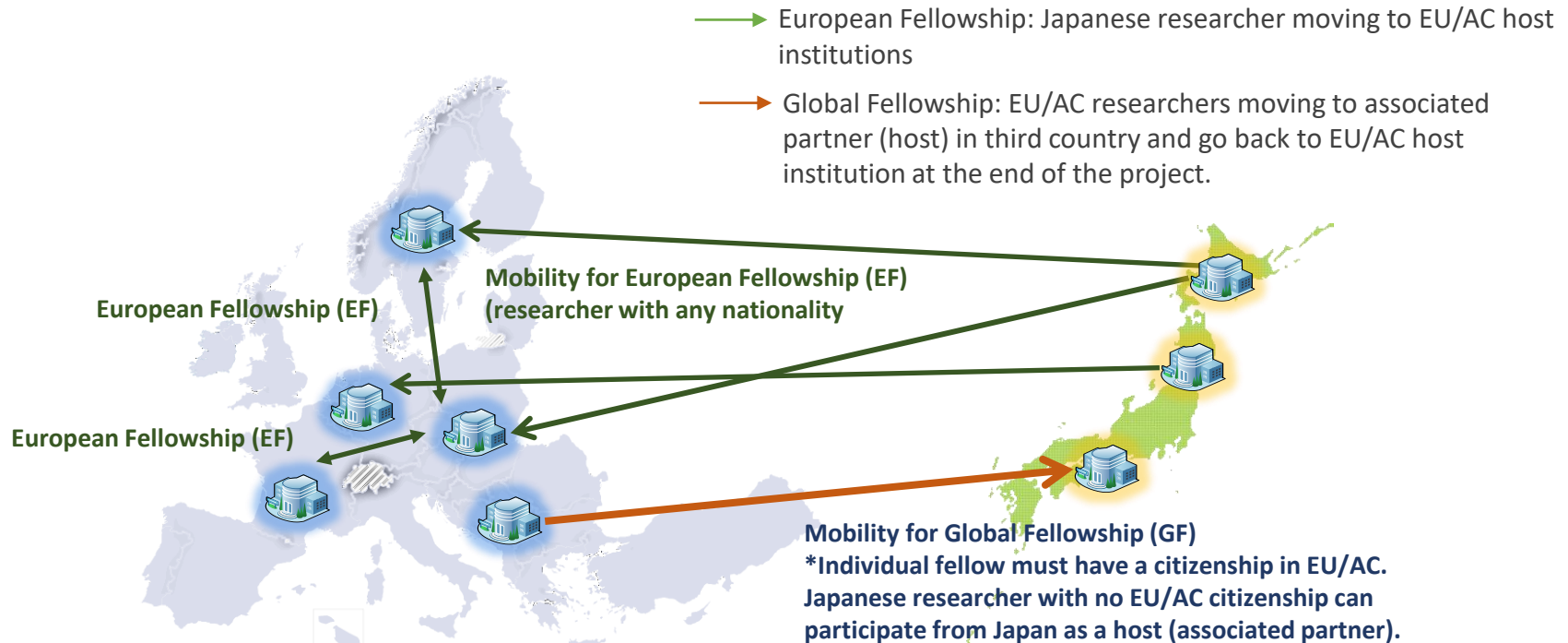
	Researcher Unit Cost (Person Month)					Institutional Unit cost (Person Month)	
科目	Living allowance	Mobility allowance	Family allowance *if applicable	Long-term leave allowance *if applicable	Special needs allowance *if applicable	Research training, networking contributions	Management cost
Postdoctoral Network	EUR 3400	EUR 600	EUR 660	EUR 4000 X % covered by beneficiary	Requested unit x (1/number of months)	EUR 1600	EUR 1200

It covers:  
 Allowances for a JP doctoral candidate who moves to EU/AC to participate in Doctoral Network.  
 \*Funds are directly paid to host institutions in EU/AC

It covers:  
 Research and Mgt costs incurred by host institutions in EU and Japan to host the candidates.( PA is required.)

\*\*No direct funding from Horizon to Japan, but fund received by EU host organizations indirectly cover some administrative costs incurred by Japanese institutions for hosting EU PhD candidates. (Partnership Agreement (PA) is required).

Researcher with PhD or equivalent moves to host a institution for further research and to obtain new skills. (Each fellow prepare a proposal and apply together with EU/AC host institutions)



**Support for  
Postdoctoral  
fellows**

**Participate as a  
host or a fellow**

**Bottom-up  
Research topic**



# Postdoctoral Fellowship-European Fellowship ( Participation as a individual fellow)


Researchers with PhD. to conduct postdoctoral research in Europe to develop new further skills.  
(Individual researchers must first find the host institution.)

## Requirements for Postdoctoral Fellowship –European Fellowship

### Eligibility of an host organization


- At least one entity from EU/AC as a host.
- Host organization must submit proposal together with the fellow.

### Eligibility of a fellow

- Nationality: No restriction  **Japanese researcher can apply as a fellow**
- Research can be done in any scientific fields (bottom-up topic) including Euratom area.
- in possession of PhD at the call deadline and up to 8 years research experience after PhD.
- Not resided /main activity in the country of the beneficiary more than 12 in the 36 months before call deadline.

**Host institution must be resided in EU/AC.**

### Mobility Rule

- Project duration : 12-24 months 
- Must be hosted by Industrial-academic institutions within EU/AC.
- Secondments worldwide up to 1/3 of the fellowship duration (novelty)
- Optional additional placement of up to 6 months in a nonacademic European organization
- Allowed to be seconded to organization outside of host institution for 3 to 6 months.

**JP individual researcher must research abroad.**

### Allowance for individual researcher (covered by host entity)

- 12-24 months research scholarship opportunity (Employment agreement including allowances and travel costs)

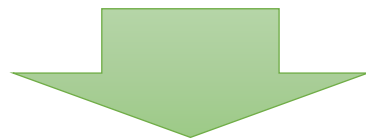
# Postdoctoral Fellowship (Costs covered by the MSCA PF)

Allowances for EU researchers and research activity costs covered by the host institutions in EU and Japan

Funds paid by EC to EU/AC host institution to cover the allowances for each fellow per month

Funds paid by EC to EU/AC host institution to cover research costs for each European fellow per month

	Researcher Unit Cost (PM)					Institutional Unit cost (PM)	
科目	Living allowance	Mobility allowance	Family allowance *If applicable	Long-term leave allowance *If applicable	Special needs allowance *If applicable	Research training, networking contributions	Management cost
Postdoctoral Fellowship	EUR 5080	EUR 600	EUR 660	EUR 5680 X % covered by beneficiary	Requested unit x (1/number of months)	EUR 1000	EUR 650



It covers:  
 Allowances for a JP research fellow who moves to EU/AC to participate in European Fellowship.  
 \*Funds are directly paid to host institutions in EU/AC.



It covers:  
 Research expenses incurred by the JP host institution for EU/AC researchers in Global Fellowship.  
 (PA is required)

	Call Topics	Call Open	Deadline
2022	Doctoral Network (DN)	3 May 2022	15 November 2022
	Postdoctoral Fellowship (PF)	13 April 2022	14 September 2022
	Staff Exchange (SE)	6 October 2022	8 March 2023
	COFUND	11 October 2022	9 February 2023

	Call Topics	Call Open (2022.12)	Deadline (2022.12)
2023	Doctoral Network (DN)	30 May 2023	28 November 2023
	Postdoctoral Fellowship (PF)	12 April 2023	13 September 2023
	Staff Exchange (SE)	05 October 2023	28 February 2024
	COFUND	10 October 2023	08 February 2024

	Call Topics	Call Open (2022.12)	Deadline (2022.12)
2024	Doctoral Network (DN)	29 May 2024	27 November 2024
	Postdoctoral Fellowship (PF)	10 April 2024	11 September 2024
	Staff Exchange (SE)	10 October 2024	5 March 2025
	COFUND	8 October 2024	6 February 2025

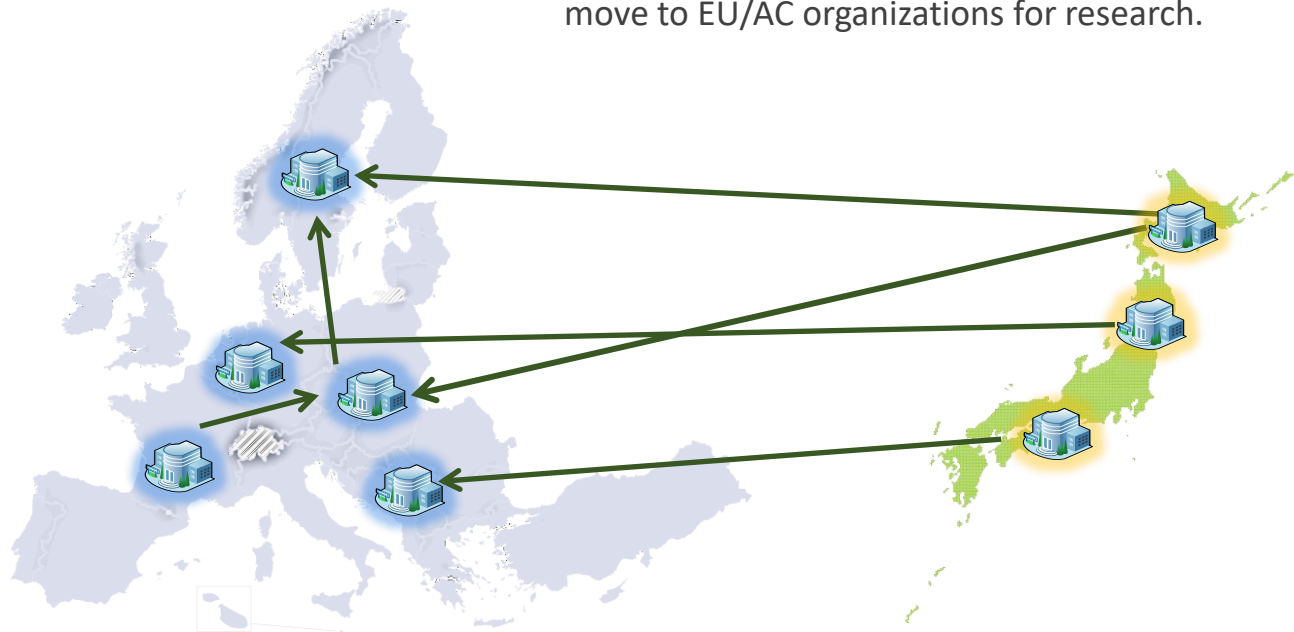
# European Research Council (ERC)

# European Research Council (ERC)

Encourage the highest quality research in Europe and support investigator-driven frontier research across all fields, on the basis of scientific excellence.

(Arrange with the host institution in advance and apply individually to Horizon Europe.)

→ Excellent researchers from all over the world (including Japan) move to EU/AC organizations for research.



**Frontier  
Research**

**Individual  
researcher**

**Bottom-up**

# European Research Council (ERC)

Supporting frontier research by researchers (Principal Investigator: PI)

should spend at least 50% of their total working time in an EU Member State

## *Starting Grant* (for young researchers)

Target:

2-7 years of experience since completion of PhD

Funding amount:

Up to € 1.5 million for a period of 5 years

## *Consolidator Grant* (for Independent researchers)

Target:

7-12 years of experience since completion of PhD and who want to consolidate their independence

Funding amount:

Up to € 2 million for a period of 5 years

## *Advanced Grant* (for senior researchers)

Target:

who have a track-record of significant research achievements in the last 10 years.

Funding amount:

Up to € 2.5 million for a period of 5

One of this small group of Principal Investigators can be hosted full-time by an institution outside of the EU

## *Synergy Grant* (for team of multiple researchers)

Principal Investigators work together and bring different skills and resources to tackle ambitious research problems

A group of two to maximum four Principal Investigators

Up to a maximum of € 10 million for a period of 6 years  
(*pro rata* for projects of shorter duration)

## ERC Implementation Arrangement (IA) Participate from the entity that researcher belongs

European Commission (EC) and Japanese granting organizations both intend to provide opportunities for Japan-based researchers supported by active Japanese granting projects to pursue research collaboration with European colleagues already supported through the EU funded ERC grants.

### Implementation Arrangement between the EC and Japanese granting organizations

[IA between JSPS and EC](#)

[IA between JST and EC](#)

[IA between AMED and EC](#)

For more details,  
please check the  
application of each  
granting organization.

# Thank you!

<https://www.ncp-japan.jp>